



Conservation Status: Vulnerable

NEW ENGLAND GHOUL

Mortifera immortalis pickmani

Description: A roughly bipedal humanoid with vaguely canine legs and cloven hooves. Skin tone is usually grayish-blue, although individual Ghouls vary widely. The mouth is heavily deformed, taking on a canine appearance with powerful jaws and a muzzle instead of a mouth.

New England Ghouls are unique in nature for one trait: they are bipedal ungulates. Scientists still do not understand the evolutionary advantage for this trait. Extensive studies have been conducted on their gait and how it benefits the species.

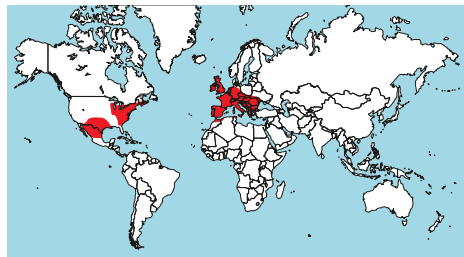
Habits and Habitat: The inspiration behind the infamous artwork of its discoverer, Richard Pickman, this species is known for its nocturnal carrion feeding habits and is a common sight in poorly guarded graveyards. It will not attack a living creature unless provoked or threatened. The New England Ghoul prefers to consume human corpses although it does not gain sustenance from eating. They appear to suffer a complete obsession with consuming dead human flesh. They will not eat a live human.

An intelligent species, the New England Ghoul is capable of speech and complex thought. Recent studies hypothesize it may be able to learn what a human knew by consuming their cerebrum although this has not been confirmed.

In 1973, a New England Ghoul was found in the walls of a castle in southern France. The creature had been immured for centuries yet it was still active. Unfortunately, it was destroyed by superstitious villagers before it could be questioned. It is hoped one day that New England Ghouls will come forward to share their unique perspective on history. As an immortal species, individual ghouls may have lived through many of the great events that shaped our world.

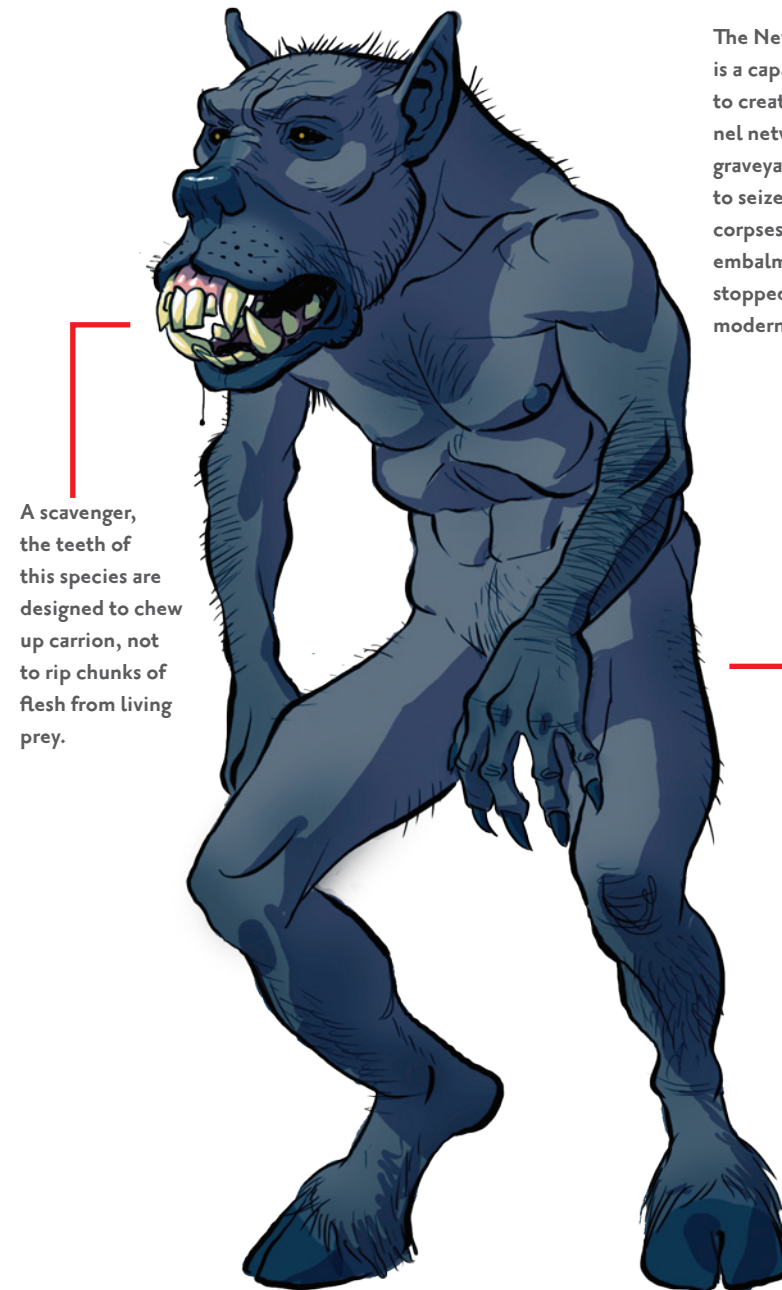
Reproduction: It is believed that humans become New England Ghouls through ritualistic cannibalism. The transformation is an extremely prolonged process and it is believed that Ghouls purposefully seek out depraved humans in order to lure them into a path of cannibalism. Eventually a cannibal undergoes a form of metamorphosis into a New England Ghoul. Regions that suffer from extreme famine often create minor populations of New England Ghouls as desperate humans turn to cannibalism to survive. These Ghouls are usually slain upon discovery. Only the Ghouls that learn how to hide their feeding habits survive more than a few months.

Range: Most established in the oldest cities of North America, especially the Yankee strongholds. There is a sparse disjunct population in the southwestern United States and northern Mexico. Encountered throughout Europe in older graveyards and cemeteries. A colony of several dozen is believed to live in the Paris Catacombs.



NEW ENGLAND GHOUL

Mortifera immortalis pickmani



A scavenger, the teeth of this species are designed to chew up carrion, not to rip chunks of flesh from living prey.

The New England Ghoul is a capable burrower, able to create elaborate tunnel networks underneath graveyards and cemeteries to seize recently buried corpses. The practice of embalming corpses has stopped this practice in modern times.